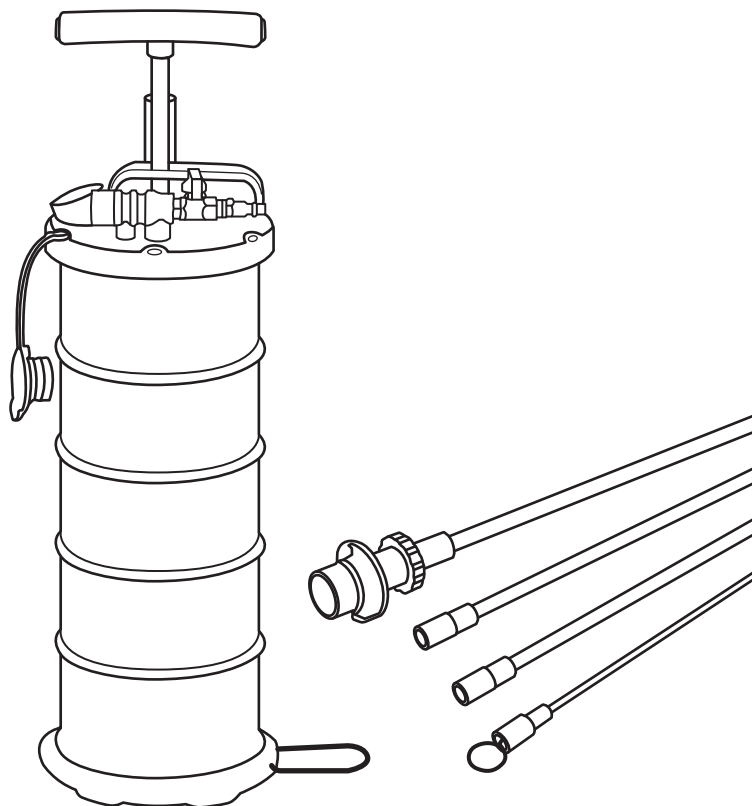




DT704002AE

GB

OIL CHANGER VACUUM FLUID EXTRACTOR 1.7GAL/6.5L PNEUMATIC&MANUAL



WARNING!

- Ensure health safety, local authority, and general workshop practice regulations are strictly adhered to when using this equipment.
- Read carefully and understand all ASSEMBLY AND OPERATION INSTRUCTIONS before operating.
- Failure to follow the safety rules and other basic safety precautions may result in serious personal injury.

SAFETY INSTRUCTIONS

- Ensure safety eye protection and protective clothing are worn when using this product.
- Keep the work area clean, uncluttered and ensure there is adequate lighting.
- Maintain correct balance and footing. Ensure the floor is not slippery and wear non-slip shoes
- Keep children and unauthorized persons away from the working area.
- Dispose of waste liquids by local authority regulations.
- The use of any accessories other than those recommended by the manufacturer or stated in the instructions manual may result in injury or may cause damages.
- Use only to extract engine or transmission oils, or similar NON-Corrosive fluids. The unit may also be used for the transfer of water.
- Gasoline, and fluids with high volatility, high corrosion and high temperature are forbidden to be applied to the extractor.
- DO NOT use to extract hazardous or harmful chemicals, solvents, petrol diesel, kerosene, alkaline, or acids. If by chance such fluids are used in the unit, it must be immediately drained and thoroughly cleaned. Use with prohibited fluids will invalidate your warranty.
- DO NOT store fluids in the container. Once used to extract fluid, it must be emptied into an approved receptacle as soon as possible.
- DO NOT disassemble the structure by yourself unless necessary to avoid leakage or damage to the vacuum pump.
- DO NOT over-tip the extractor when emptying as this may cause fluid to enter the inner pump chamber.
- DO NOT use the unit if it has been dropped or mishandled, check the unit to ensure there is no damage
- Keep the extractor clean and store it in a safe dry location. DO NOT store it in areas of high temperature, direct sunlight, rain, or snow.

A. 1.7 GAL/6.5L Oil Extractor Tank

B. Main Tube

Dia. 0.31x 0.39 inch/ Length:39.3 inch

C. Extension Tube 1

Dia. 0.2x 0.28 inch/ Length:39.3 inch

D. Extension Tube 2

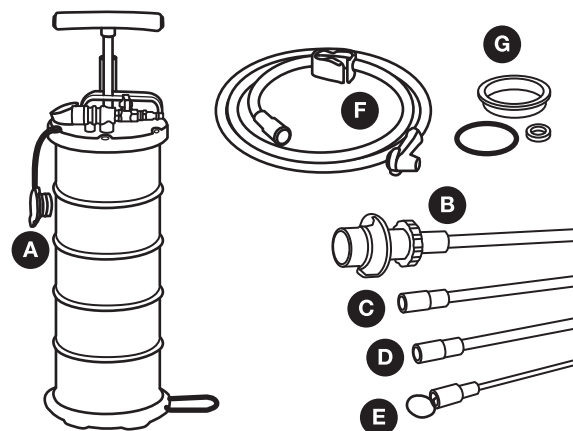
Dia. 0.16x 0.24 inch/ Length:39.3 inch

E. Extension Tube with Wire Dipstick

Dia. 0.08x 0.16 inch/ Length:39.3 inch

F. Brake Bleeding Hose

G. Alternate Rubber RingX3



Pump Handle-Manual mode

Get the job done anywhere and anytime

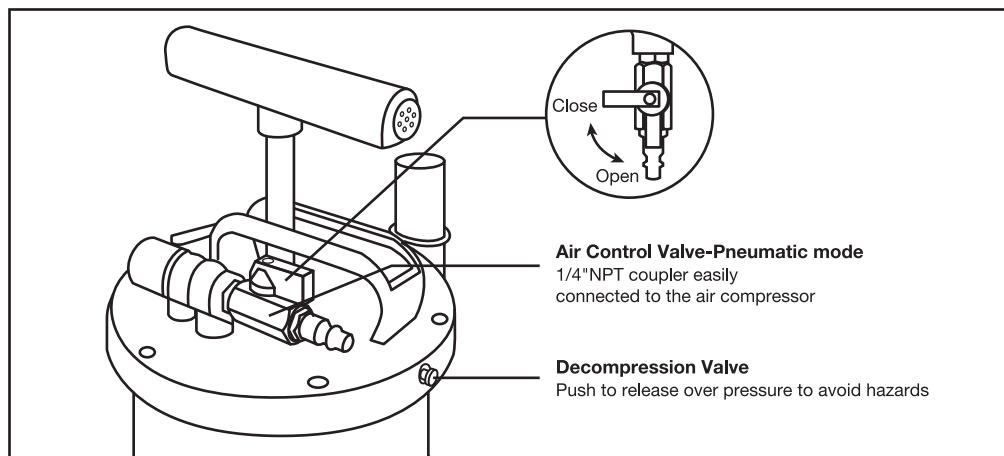


Eagle Mouth Spout

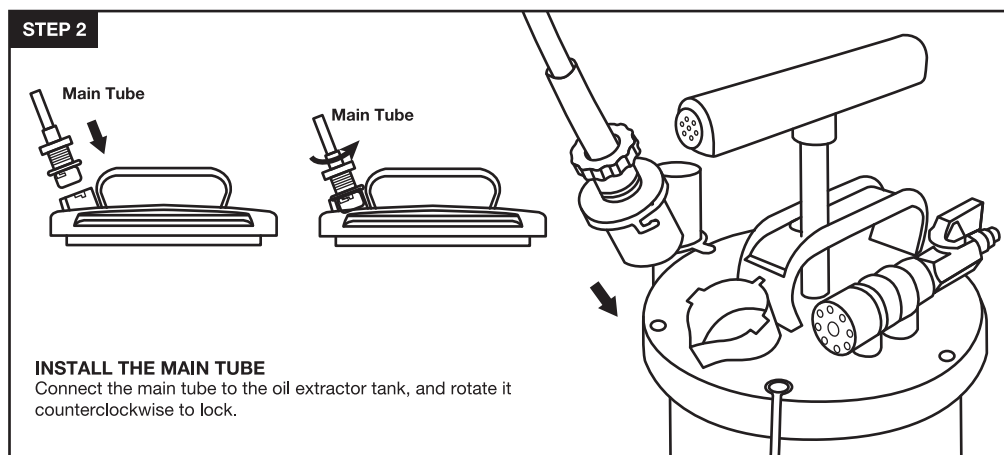
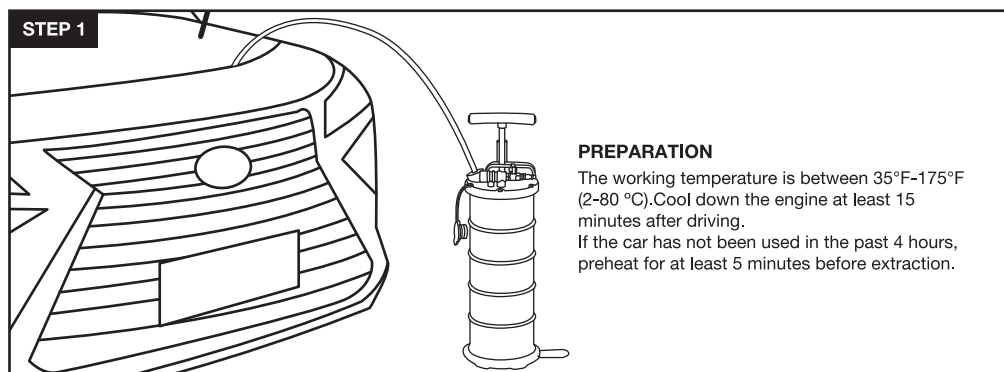
Pour out used oil
without spilling

Safety Lock

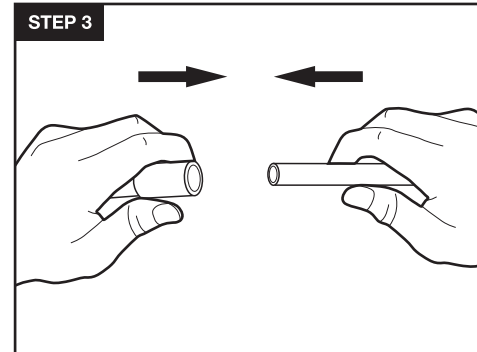
Provide tight seal
and safer operation



INSTRUCTION

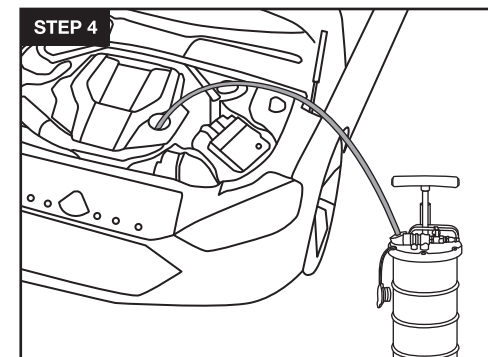


INSTRUCTION



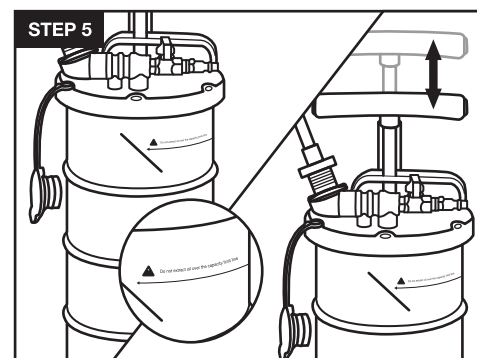
INSTALL THE EXTENSION TUBE

Choose an extension tube fitting your oil dipstick hole, and connect it to the main tube.



INSERT THE TUBE

Insert the connected tube into the dipstick pipe until it reaches the bottom of the oil pan.

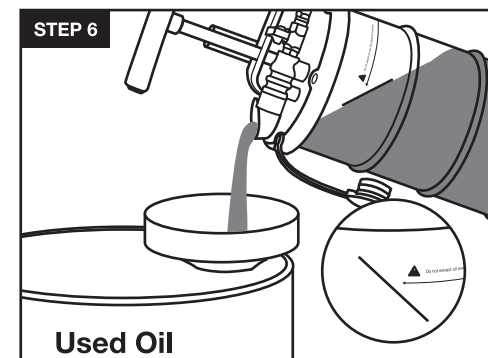


⚠ Do not extract oil over the capacity limit line

EXTRACT OIL

Pneumatic mode: Open the air control valve and Connect the 1/4" NPT quick coupler to the air compressor. Working pressure is between 40-170PSI

Manual mode: Close the air control valve, and pump the handle to extract oil manually.



⚠ Do not exceed the limit line while pouring out oil

POUR OUT THE OIL

- Remove the extension tubing from the fluid reservoir and hold the end of the tube above the extractor tank until fully drained before removing it from the main tube.
- Remove the main tube clockwise, and the air source must be disconnected in pneumatic mode.
- Press the decompression valve to release the overpressure.
- Pour the used fluid into another container and take it to the nearby disposal center for recycling.

MAINTENANCE

1. Inspect periodically all parts and accessories and replace them if damaged or used.
2. Have damaged parts replaced by an authorized service center.
3. Check the nuts periodically and tighten them if they are loose.
4. Keep the product properly maintained and clean for better and safer performance.
5. After use, it is recommended to clean the product to preserve it.